

# WILDERNESS LOUISVILLE



WILDERNESS  
LOUISVILLE, INC

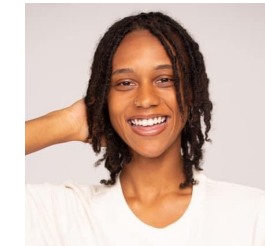
# ANNUAL REPORT 2021



# Board Members



Andy Reynolds, Chair  
Vicki Welch, Vice Chair  
Charlotte Caldwell, Treasurer  
Patricia Tennen, Secretary  
Kendall Boyd, Equity Officer  
Tom Armstrong  
Sharon Bond  
Krista Drescher Burke  
Chuck Haddaway  
Johnique Ison  
JoAnn James  
Jenny Johnston  
Lynn Rippy  
Randy Strobo  
Erin Wagoner



# MAJOR ACTIVITIES

## Championing Louisville's Natural Areas

Louisville loves its parks!

Our system of parks and natural areas is both extensive and varied. Residents in neighborhoods across town want their park spaces to be well-maintained and offer a maximum range of opportunities. As demands by the public for equitable park improvements and park services have grown over time, including expanded opportunities for nature-based recreation and education, there is a greater need for community-based non-profits to step up and enhance Metro government's contribution.

Until the formation of Wilderness Louisville in 2013, neither Jefferson Memorial Forest (JMF) nor the Louisville Parks' Natural Areas Division managed by JMF staff had an effective non-profit advocate for enhancing and protecting these park assets or promoting equitable outdoor recreation, education, or land stewardship programming within them.

## National Recognition of our ECHO Program

Jefferson Memorial Forest Staff were featured in National Recreation and Parks Association's (NRPA) Podcast, Open Space Radio! Listen to a discussion on equity in outdoor spaces and how the ECHO Mobile brings nature exploration opportunities to local youth [HERE!](https://www.nrpa.org/blog/creating-opportunities-for-underserved-youth-in-louisville-episode-084/)

<https://www.nrpa.org/blog/creating-opportunities-for-underserved-youth-in-louisville-episode-084/>

Featuring: Dashaune Jones JMF's ECHO Mobile Program Lead, Jocari Beattie Former JMF Community Outreach Specialist & Owner of JoBe Products, Kenyetta Johnson Program Assistant and Focus Area Coordinator for the Youth Conservation Corps at YouthBuild Louisville



Left to right, above: Dashaune Jones, Jocari Beattie, Kenyetta Johnson



# MAJOR ACTIVITIES

## Electric Vehicle (EV) Charging Station

Thanks to our donors: Evolve KY, Louisville Air Pollution Control District, and the Louisville Sustainability Council, we installed an EV charging station in the Tom Wallace Recreation Area parking lot at JMF.



## Implicit Bias Training for Board Members



Metro's Chief Equity Officer and Wilderness Louisville Board Member, Kendall Boyd, led an Implicit Bias Training for JMF Staff and Wilderness Louisville Board Members. Wilderness Louisville and JMF are thankful for this opportunity, and will continue to pursue more intensive racial equity and implicit bias training as we seek to increase equitable access to nature and nature-related programming in Louisville.

## ECHO recognized by National Recreation & Park Association

Louisville ECHO was highlighted nationally in The National Recreation and Park Association's recently released resource guide for departments seeking to improve their workforce development efforts. The Louisville ECHO program, with its emphasis on addressing health and racial equity by providing youth of color with summer job opportunities in support of increasing equitable access to nature in west Louisville, was highlighted alongside the work of departments in Sacramento, Montgomery County, Maryland, Peoria, Illinois, Atlanta, and Chicago.



# MAJOR ACTIVITIES

## West Louisville Outdoor Recreation Initiative (WLORI) selected for the “Improving Social Determinants of Health: Getting Further Faster” Program

.In January, the Association of State and Territorial Health Officials (ASTHO) announced grantees for the “Improving Social Determinants of Health: Getting Further Faster” program, which supports community partnerships in evaluating effective strategies for addressing social determinants of health (SDoH). Through this program, ASTHO and its partner, the National Association for County and City Health Officials (NACCHO), have awarded over \$2 million to 42 multi-sector partnerships across the nation to advance health equity in their communities.

The Centers for Disease Control and Prevention (CDC) define SDoH as the “conditions in the places where people live, learn, work, and play that affect a wide range of health and quality-of-life-risks and outcomes.” It is widely accepted that multiple factors contribute to an individual’s health and sense of wellbeing and that such factors are not developed equitably across a given population.

Through this grant program, Wilderness Louisville (WL) received a \$50,000 award to conduct a retrospective evaluation of strategies implemented by the Louisville is Engaging Children Outdoors (ECHO) program. ECHO is part of the broader West Louisville Outdoor Recreation Initiative (WLORI), which aims to address SDoH related to the built environment, social connectedness, education access, and economic stability through investing in public park infrastructure improvements, and supporting inclusive programming centered on nature education and outdoor recreation.

Both Louisville ECHO and the WLORI have been incorporated into citywide documents, including the most recent Health Equity Report (2017) released by Metro’s Center for Health Equity (CHE), and Metro’s Community Resilience Strategy (2019), as part of efforts to improve health equity through fostering greater access to the outdoors and nature related programming.



# MAJOR ACTIVITIES

## ECHO Updates

This past year has been a tough one for all, especially for our students and educators in traditional and non-traditional settings. The year 2020 presented us with many challenges and many opportunities to adapt and be flexible. We are fortunate to maintain engagement with our three partner schools and their students (King, Portland, and Coral Ridge) by supplementing their nontraditional instruction (NTI) with live virtual lessons from the Forest. This spring we were approved to continue in-person programming with some restrictions. Our out-of-school time (OST) programming resumed at partner community centers (Southwick, Sun Valley, and California), and we had a full calendar of activities such as archery, fishing, birding, and canoeing, as well as environmental education lessons on bugs, trees, and identifying animal signs.

## ECHO Putting Down Roots in West Louisville

If you have followed growth of the Louisville is Engaging Children Outdoor Initiative since its launch in 2008, you have seen the steady effort to create opportunities for youth and families to explore nature right in west Louisville that complement opportunities available at Jefferson Memorial Forest. Construction of a bicycle pump track (2018) and a boat/canoe ramp (2020) in Shawnee Park along with recent completion of construction documents for projects like restoration of Chickasaw Park pond (2021) are advancing this work. The vision of the West Louisville Outdoor Recreation Initiative is to create a neighborhood base in west Louisville for expanding Louisville ECHO programming to serve youth across multiple ages and to build staff capacity that is representative of the community served. This summer we took two important steps in that direction. We installed a temporary program office in Shawnee Park housing 3-5 new staff, which will permit expansion of Louisville ECHO programming. In other exciting news, Mayor Fischer and Louisville Metro Council allocated \$2.5 million in the current Metro Budget towards construction of the Shawnee Outdoor Learning Center.



Rendering of future Shawnee Outdoor Learning Center

# MAJOR ACTIVITIES

## Great Urban Parks Campaign (GUPC) Grant completed

This summer, Natural Areas staff successfully executed activities associated with a \$195,000 GUPC grant received from the National Recreation and Parks Association in 2018. This grant was focused on creating green park infrastructure to address storm water management in the face of climate change. The grant resulted in construction drawings for expansion of Chickasaw Park pond, disconnection of its overflow from the combined sewer system, and creation of construction drawings for a new forest plan area in the park. The designed improvements, as well as a bio-infiltration trench constructed by SummerWorks participants in 2018, all will ultimately flow to a series of step pools completed in June 2021 and which are located along the old boat ramp road in the park.



## \$100,000 in House Appropriations Bill for Riverbank Stabilization in Chickasaw Park

This summer Congressman Yarmuth supported legislation in the U.S. House of Representatives that would fund a feasibility study to address sections of remaining severe riverbank erosion in Chickasaw Park (see photo at right). If ultimately signed into law by the President, it would initiate a review by the U.S. Army Corps of Engineers that could result in federal funding to resolve this issue and thus protect park resources and create a safer environment for park users seeking to experience the Ohio River. This project, supported by Wilderness Louisville, is one of the recommendations included in the Metro's 2016 West Louisville Outdoor Recreation Master Plan.

# 2021 FINANCIALS

## WILDERNESS LOUISVILLE

NET ASSETS AT THE BEGINNING  
OF THE YEAR:

\$280,906

### REVENUES

GRANTS AND  
CONTRIBUTIONS:

\$285,130

### EXPENSES

Program Expenses: \$90,374

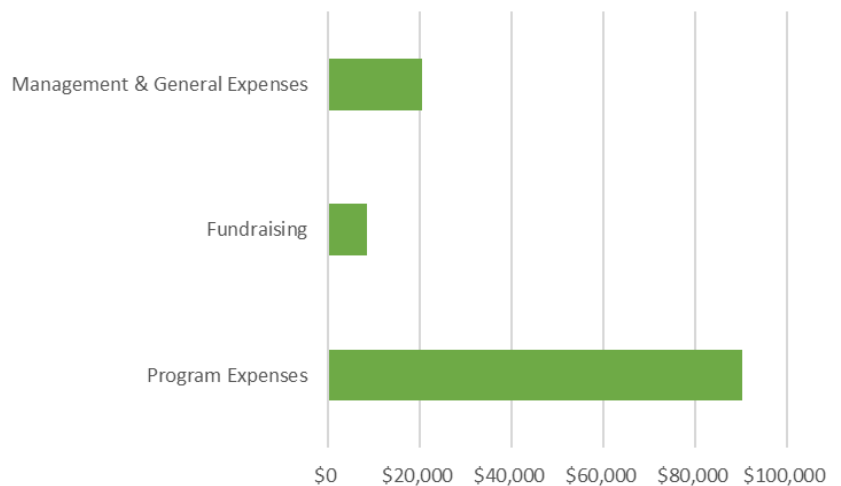
Fundraising: \$8,471

Management & General: \$20,679

NET ASSETS AT THE END OF THE  
YEAR:

\$447,628

### EXPENSES





# THANK YOU FOR YOUR SUPPORT

## \$5000 and above

JEWISH HERITAGE FUND  
KENTUCKIANA WORKS  
LG&E  
NORTON FOUNDATION

## \$500-\$4999

TOM ARMSTRONG  
CRALLE FOUNDATION  
DAWN FOODS  
DENDRIFUND  
TOYOTA



## \$100 TO \$499

ANONYMOUS  
SHARON BOND  
MARK CHAFFINS  
KELLY CLARK  
DACIA CROOT  
KRISTA DRESCHER-BURKE  
TRACY EVANS  
DACIA CROOT  
JUSTIN FEASTER  
ELIZABETH FOLEY  
DAVID GUILDEY  
ROBERT HAWLEY  
EVERETT HOFFMAN  
BARBARA HURT  
JOANN JAMES  
JENNIFER JOHNSTON  
JESSICA KANE  
BARBARA KNOX  
BENNETT KNOX  
DAVID KNOX  
LOIS LUCKETT  
KENNETH REYNOLDS  
RANDAL STROBO  
PATRICIA TENNEN  
VICKI WELCH

## UP TO \$99

ELIZA AL-LAHAM  
ANONYMOUS  
JOCAREI BEATTIE  
BRIAN BINGHAM  
DENNIS BRIAN  
JENNIFER BRIAN  
KENDALL BOYD  
JOSHUA BOYDSTUN  
EVA CADAVID  
CHARLOTTE CALDWELL  
JELISA CHATMAN  
VIRGINIA DELANEY

DANA DOUGHERTY EVANS  
CAROL EDELEN  
STEVEON EDWARDS  
ELIZABETH FREY  
JOHN GUTHRIE  
GERALDINA GRUNBAUM  
EILEEN HOLSTON  
JOHNIQUE ISON  
MANDY JOLLEY  
ROBERT JONES  
EMILY K  
KENNETH KAREM  
REBECCA KATZ  
MICHELLE KNOX  
JENNIFER KOCH  
MARIA KOERNER  
JOHN LEWIS  
ROBERT LINDGREN  
COLIN MAHER  
CONNIE MARRETT  
TRACY MARTIN  
ELIZABETH MCMAHON  
ANDREW MOON  
CARRICK MOON  
BRUCE MURRAY  
JUDITH PETERSEN  
JOSHUA POOLE  
LYNN RIPPY  
ROSE SMITH  
MICHELLE SPAIN  
SAM STEWART  
KYLE UNDERWOOD  
EMILY VITALE  
ERIN WAGONER  
LAUREN WAHL  
AMY WASHBURN  
JENNIFER WILLIAMSON  
VICTOR WOLFORD  
CAROLE YOCUM  
MARK YOUNG