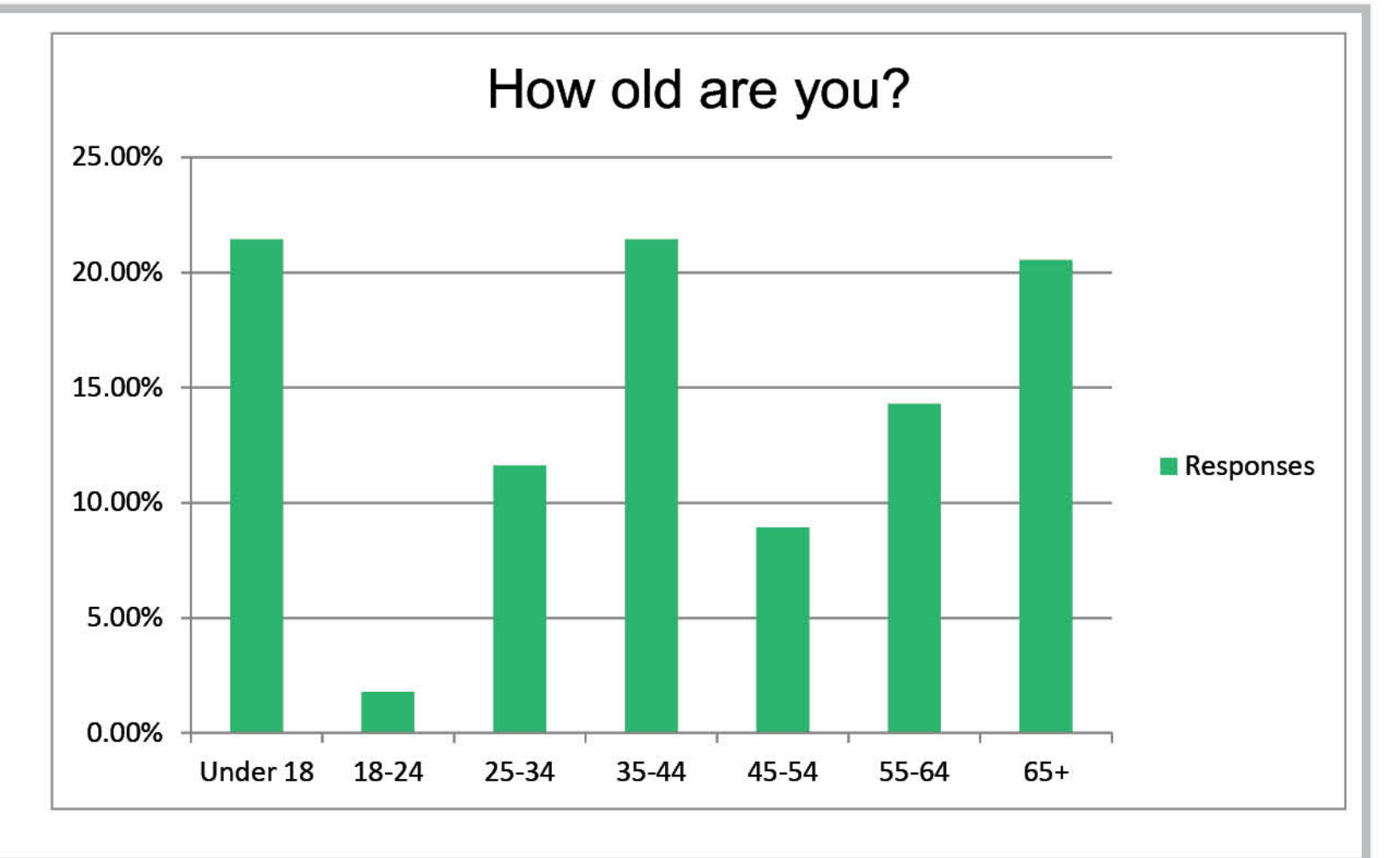
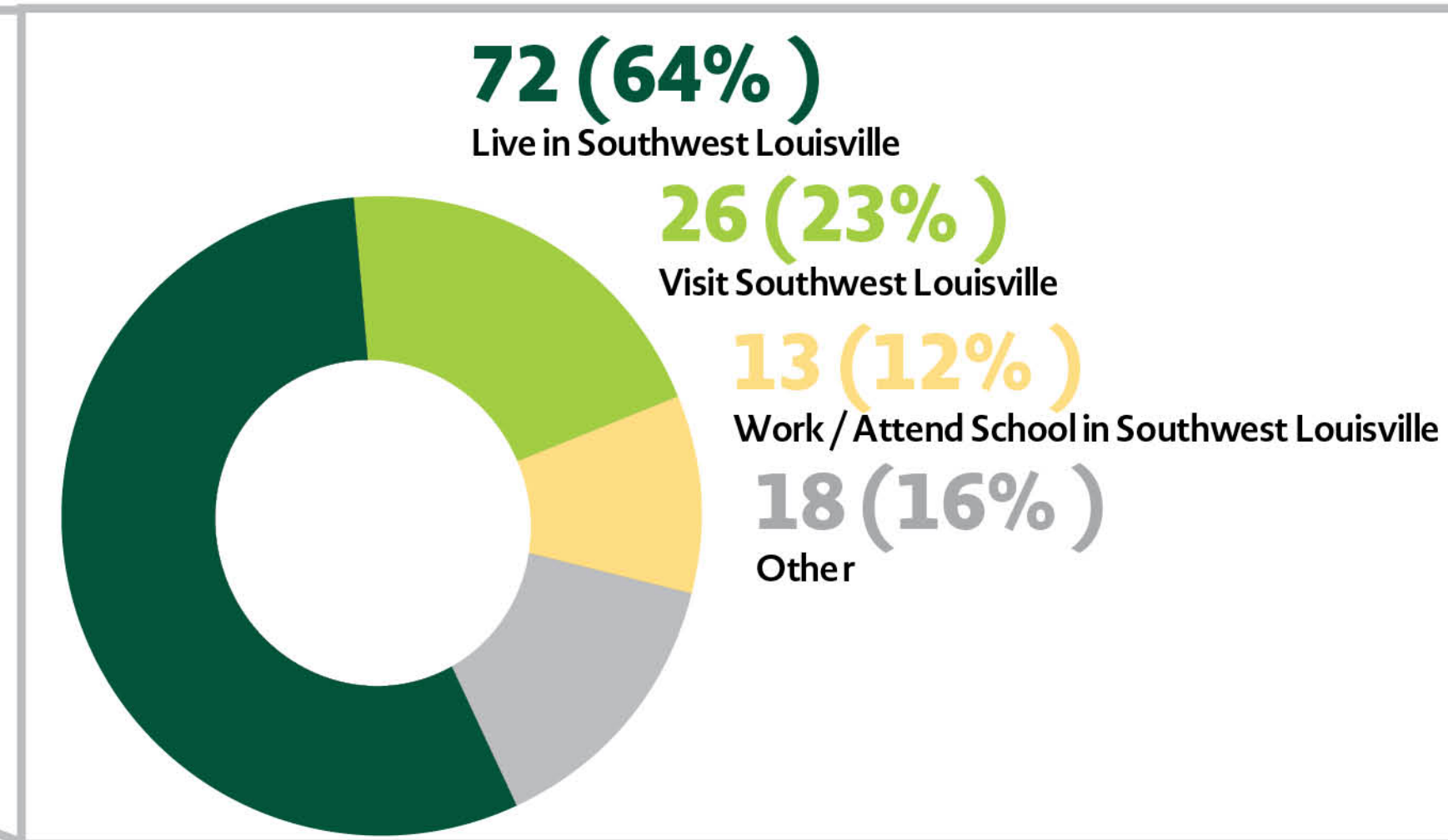
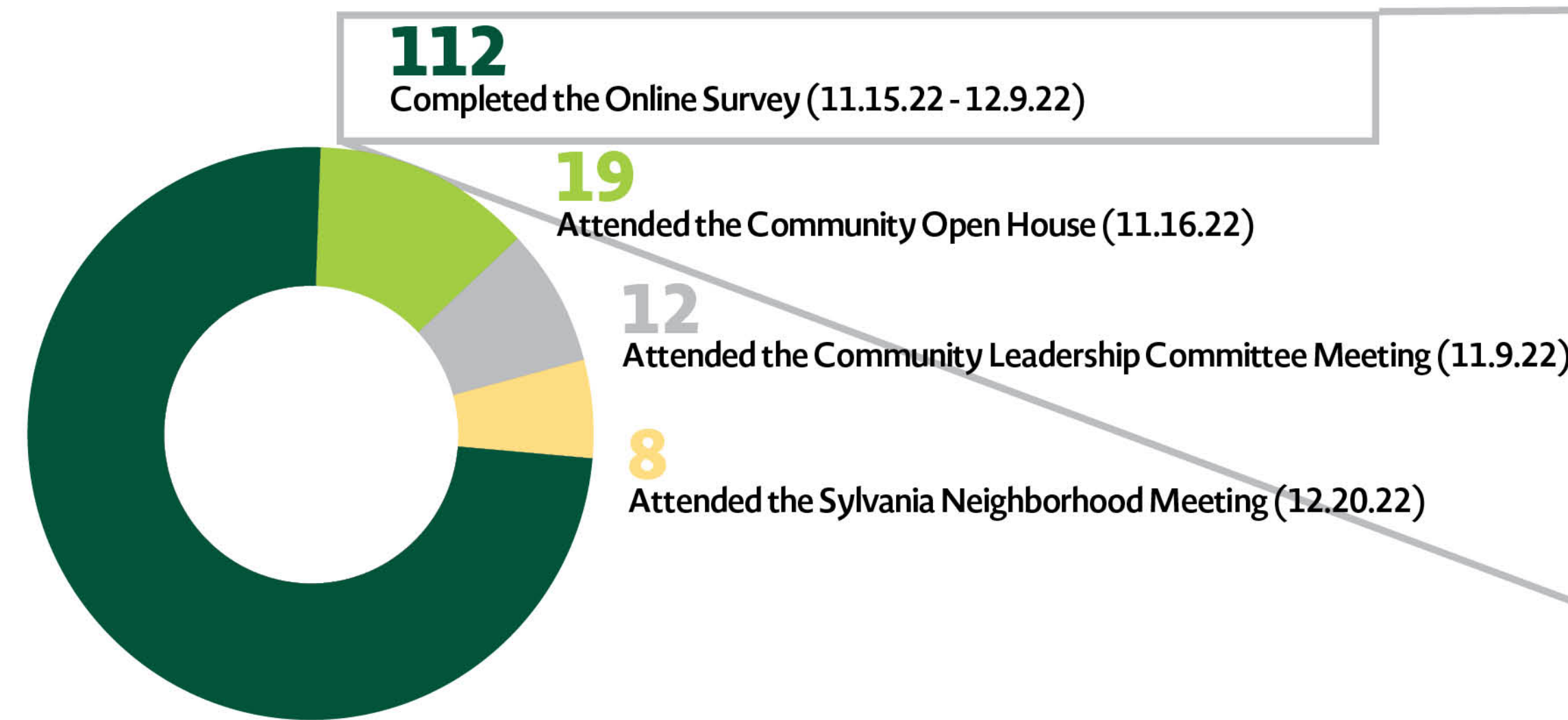




Concept Exploration - Public Feedback Summary



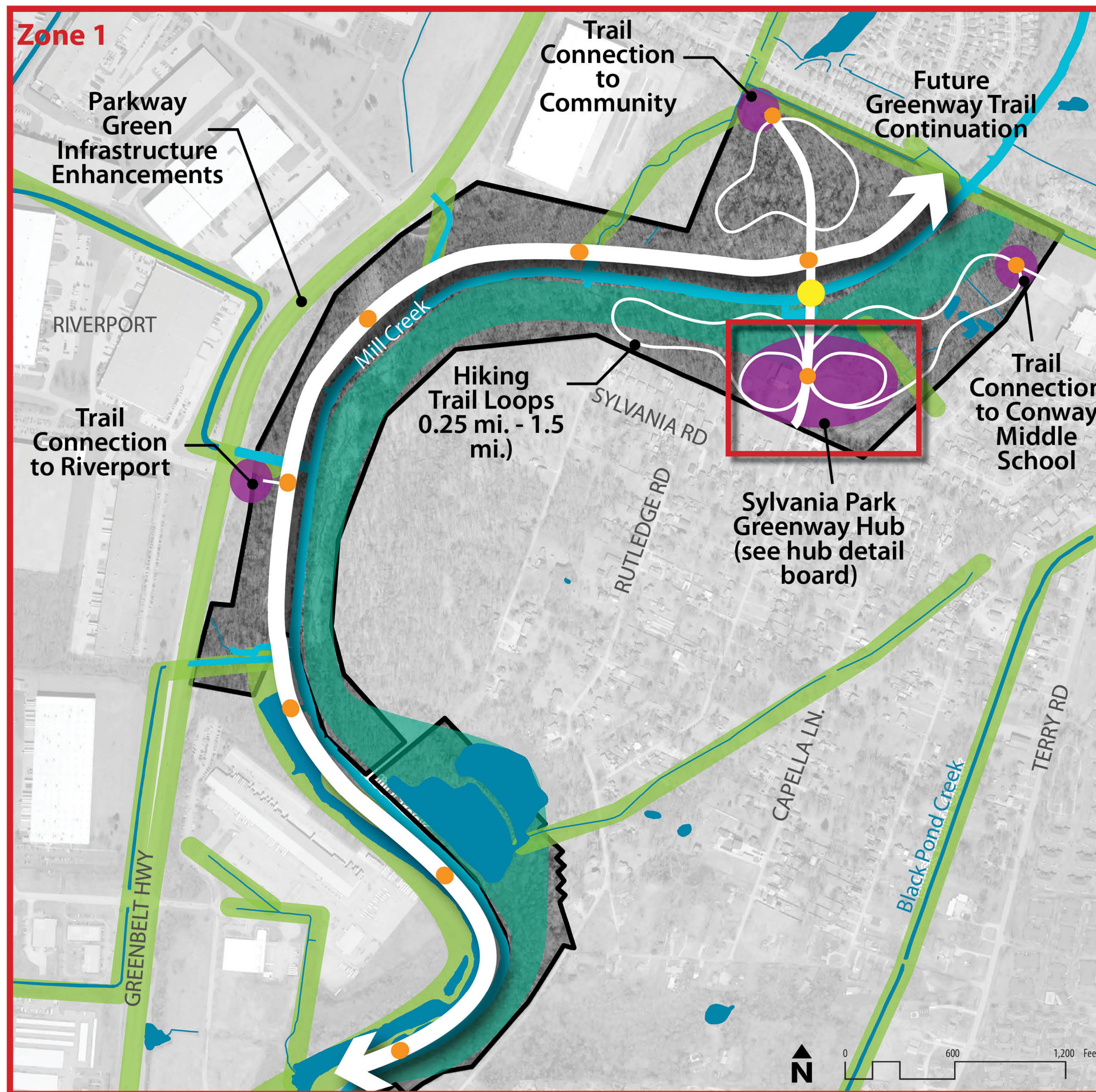
Active & Passive Recreation Preferences

Hiking Trails 59 (55%)	Fishing 51 (47%)	Wildlife Viewing 48 (44%)	Running/Walking Trails 47 (44%)	Dog Friendly Areas 40 (37%)	Ropes Course / Zip Line 32 (30%)	Picnicking 32 (30%)
Sled Riding 27 (25%)	Bike Trail 26 (24%)	Pavilion / Gathering Space 25 (23%)	Swings 25 (23%)	Disc Golf 24 (22%)	Trail with Fitness Stations 22 (21%)	
Equestrian Trails 19 (18%)	Bird Watching 19 (18%)	Sport Courts 18 (17%)	Rock Climbing 13 (12%)	Wellness Classes 13 (12%)	Wildlife / Bird Blind 12 (11%)	Fitness Station Hub 7 (7%)

Zone 1 Concept Exploration



Key Map



Grab a sticky note and share your thoughts.

Have we missed anything?
Creek Access (7); Wildlife Viewing (6); Horse Trails (5); Kayaking / Canoe (4)

What do you like / dislike?
Like: Natural / Low-Impact (13); Native Plants (4); Hiking/running trails (4)
Concerns: Homeless (3), Funding/Maint (3)

LEGEND

- Proposed Continuous Mill Creek Greenway Trail ①
- Primary Greenway Hub / Trailhead (see hub detail board) ④ ⑤
- Tertiary Community Greenway Hub / Trailhead
- Interpretive/Education Rest Stop ③ ⑤
- Greenway Trail Water Crossing ②
- Stream Restoration Zone
- Promote Stewardship with Public/Private Partnership Opportunity

Choose Your Preference

Amenities Throughout Greenway

Low Impact/ Cost ← → High Impact / Cost

① Continuous Greenway Trail
 (Soft surface/ unpaved hiking trail vs. paved mixed use accessible trail)



Hiking Trail

47



Mixed Use Trail

② Greenway Trail / Mill Creek Crossing
 (Large stone steppers vs. accessible bridge/boardwalk/overlook)



Stone Crossings

57



Bridge/Overlook

③ Education Rest Stops along Trail
 Nature / cultural education signage vs. outdoor classrooms with educational signage)



Educational Signage

40



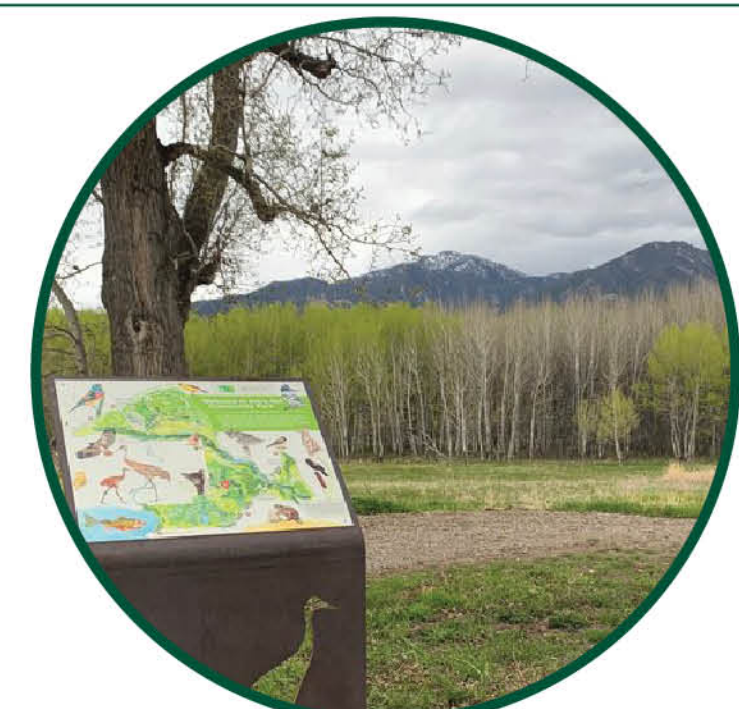
Outdoor Classroom

④ Native Planting
 (Native plants throughout Greenway vs. additional designed arboretum with native plants/trees at specific locations)



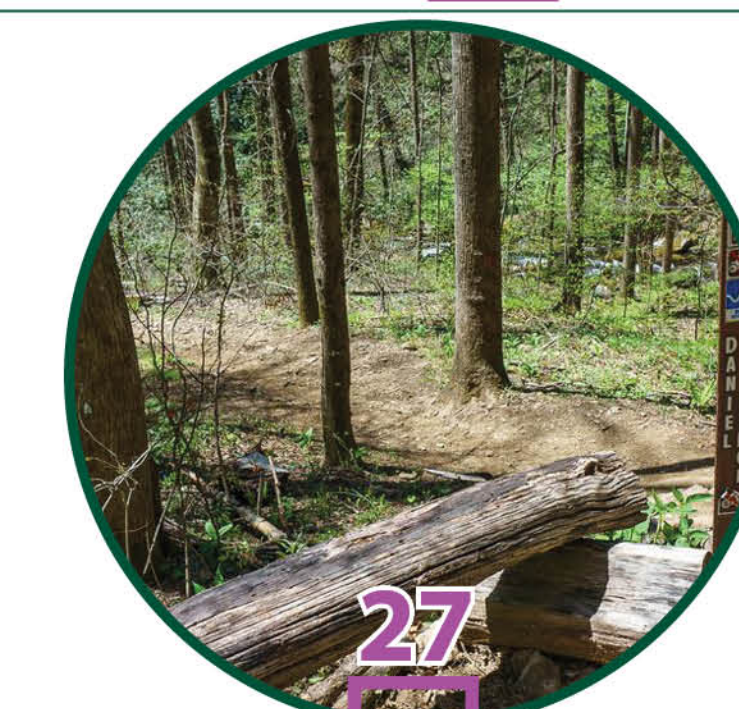
Native Landscape

31



Arboretum/Demonstration

⑤ Furnishings
 (Made from materials found on site vs. fully furnished hub)



Natural Materials

27



Furnished Hubs



Sylvania Park Greenway Hub Concept Exploration



Option 1: Sylvania Park Nature Education Hub

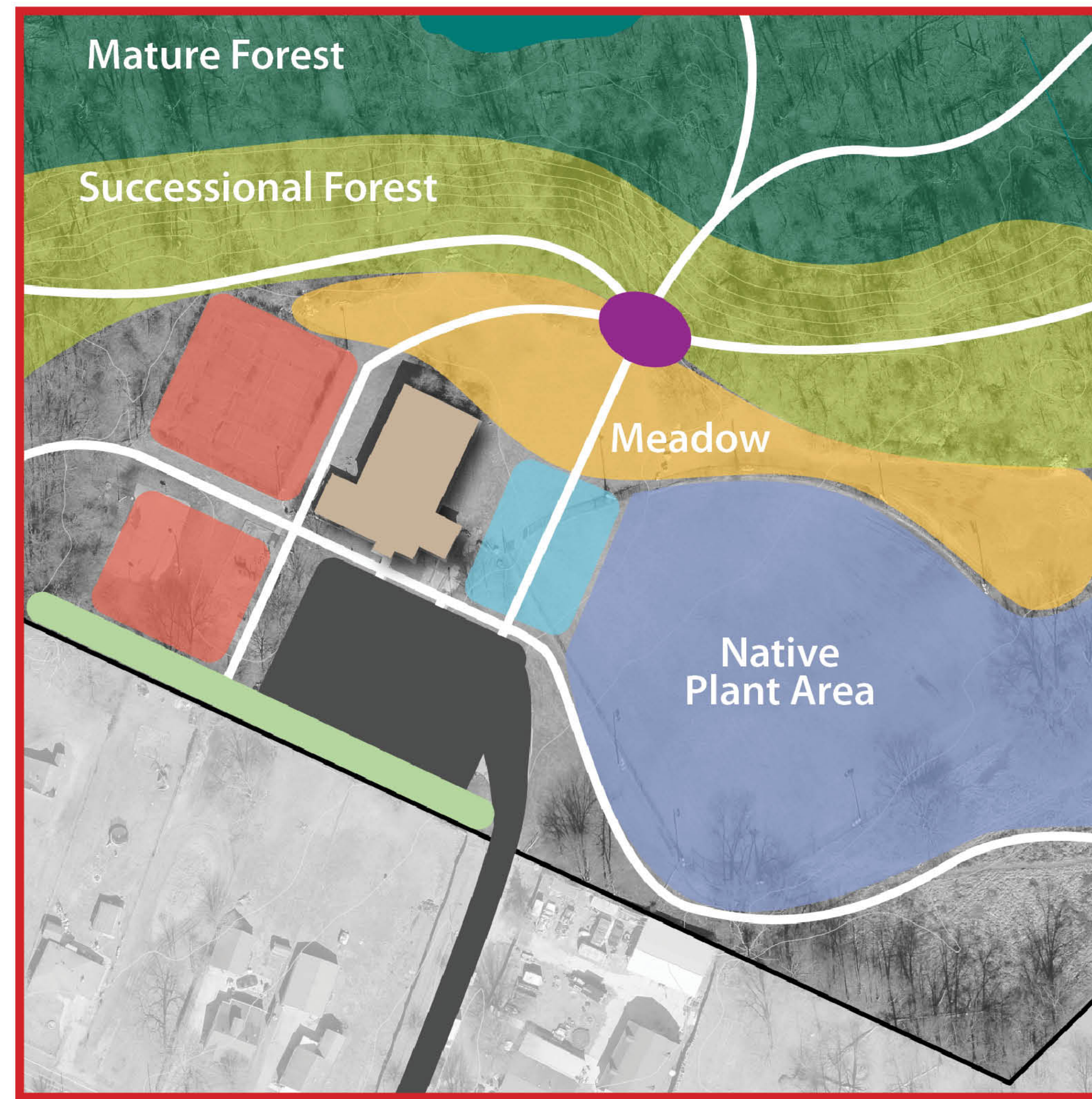
LEGEND

- Proposed Site Walks / Hiking Trails
- Greenway Trailhead
- Existing Community Center Building
- Nature - Inspired Play
- Community Gardens / Picnic Grove
- Vegetative Buffer
- Existing Parking / Drive

Grab a sticky note and share your thoughts.

Does the building stay, go, or transform into open air shelter?

Transforms - 49 (59%)
 Sylvania residents have a strong desire to reopen the building as a true community center with programs and support services (i.e., recreation, fields, playground, social services, counseling, meals, etc.)



Option 2: Sylvania Park Adventure Hub

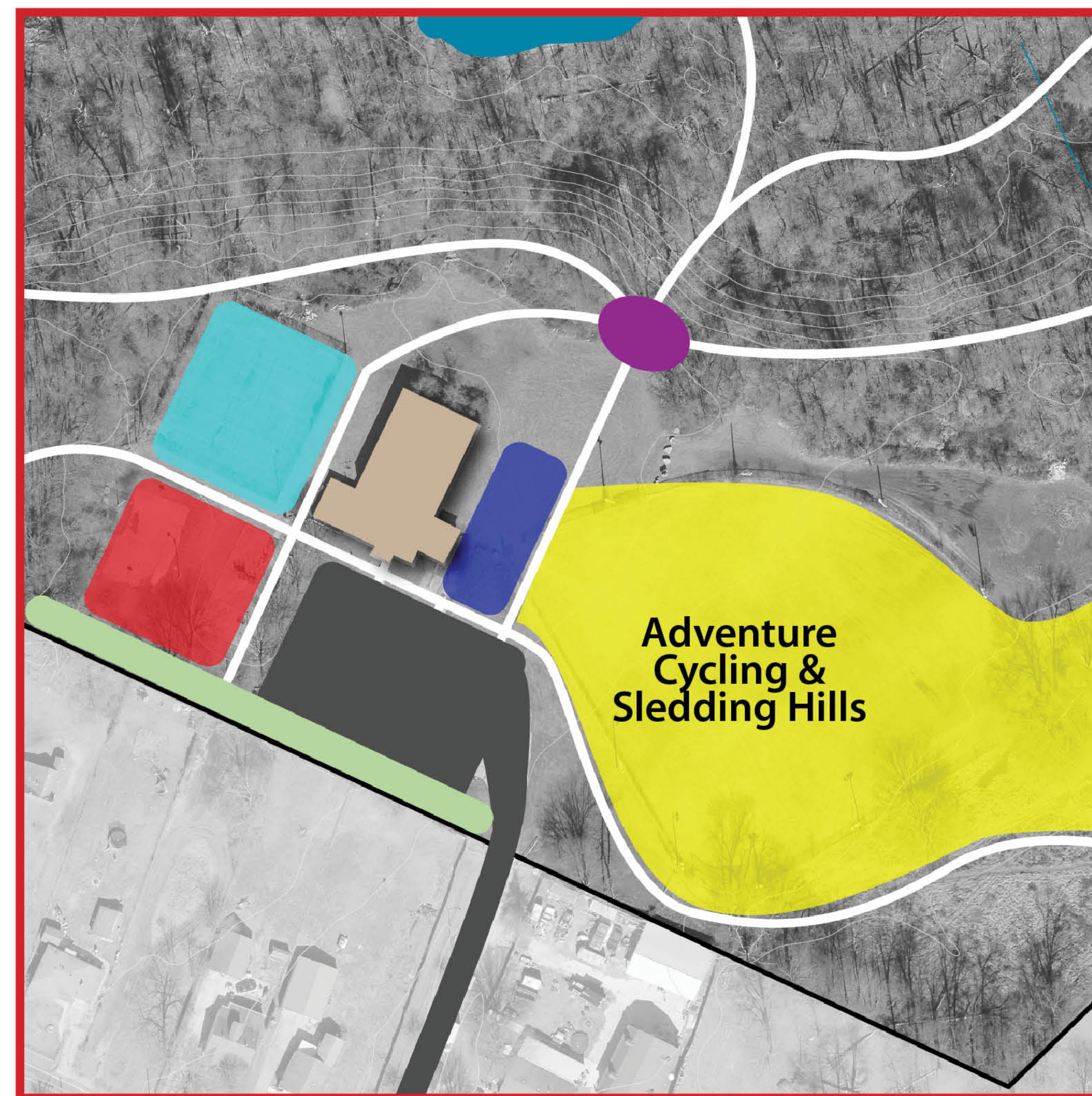
LEGEND

- Proposed Site Walks / Hiking Trails
- Greenway Trailhead
- Existing Community Center Building
- Existing Parking / Drive
- Climbing Wall & Ropes Course
- Agility Course / Adventure Playground
- Community Gathering Space

Grab a sticky note and share your thoughts.

Does the building stay, go, or transform into open air shelter?

Transforms - 49 (58%)
 Sylvania residents have a strong desire to reopen the building as a true community center with programs and support services (i.e., recreation, fields, playground, social services, counseling, meals, etc.)



What Would You Like to See?

Use stickers to select your top 3 preferences below.

- Existing building as indoor / outdoor local foods market and pavilion / gathering space **64 (52%)**
- Native Plant Nursery **60 (48%)**
- Community Gardens **44 (35%)**
- Educational Signage **43 (35%)**
- Nature Themed Play **41 (33%)**
- Existing building as Nature Education Center / Urban Forest School **32 (26%)**



What Would You Like to See?

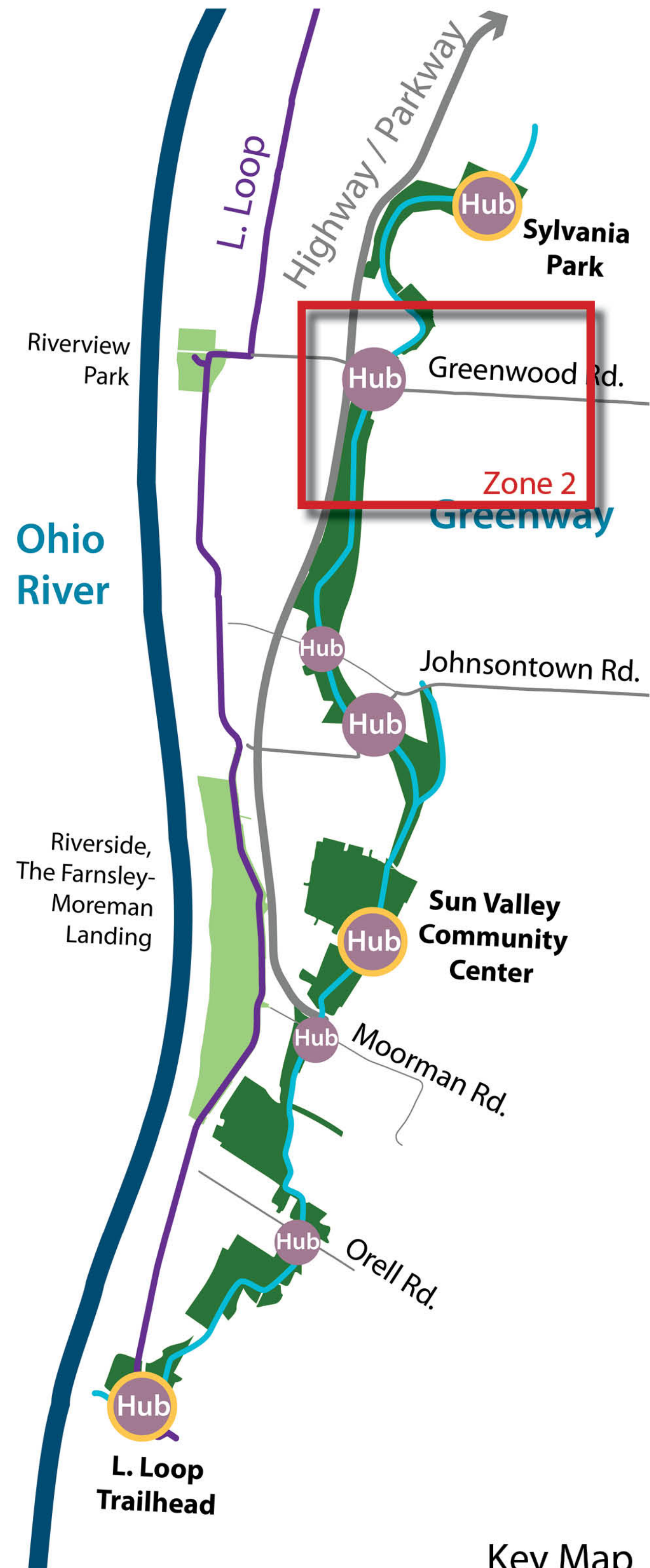
Use stickers to select your top 3 preferences below.

- Agility Course / Adventure Playground **63 (51%)**
- Sledding hill **54 (44%)**
- Existing building as indoor/outdoor pavilion / gathering space **50 (40%)**
- Adventure Cycling **46 (37%)**
- Ropes course / zip line **42 (34%)**
- Fitness stations along site walks **37 (30%)**
- Climbing Walls **10 (26%) in person**

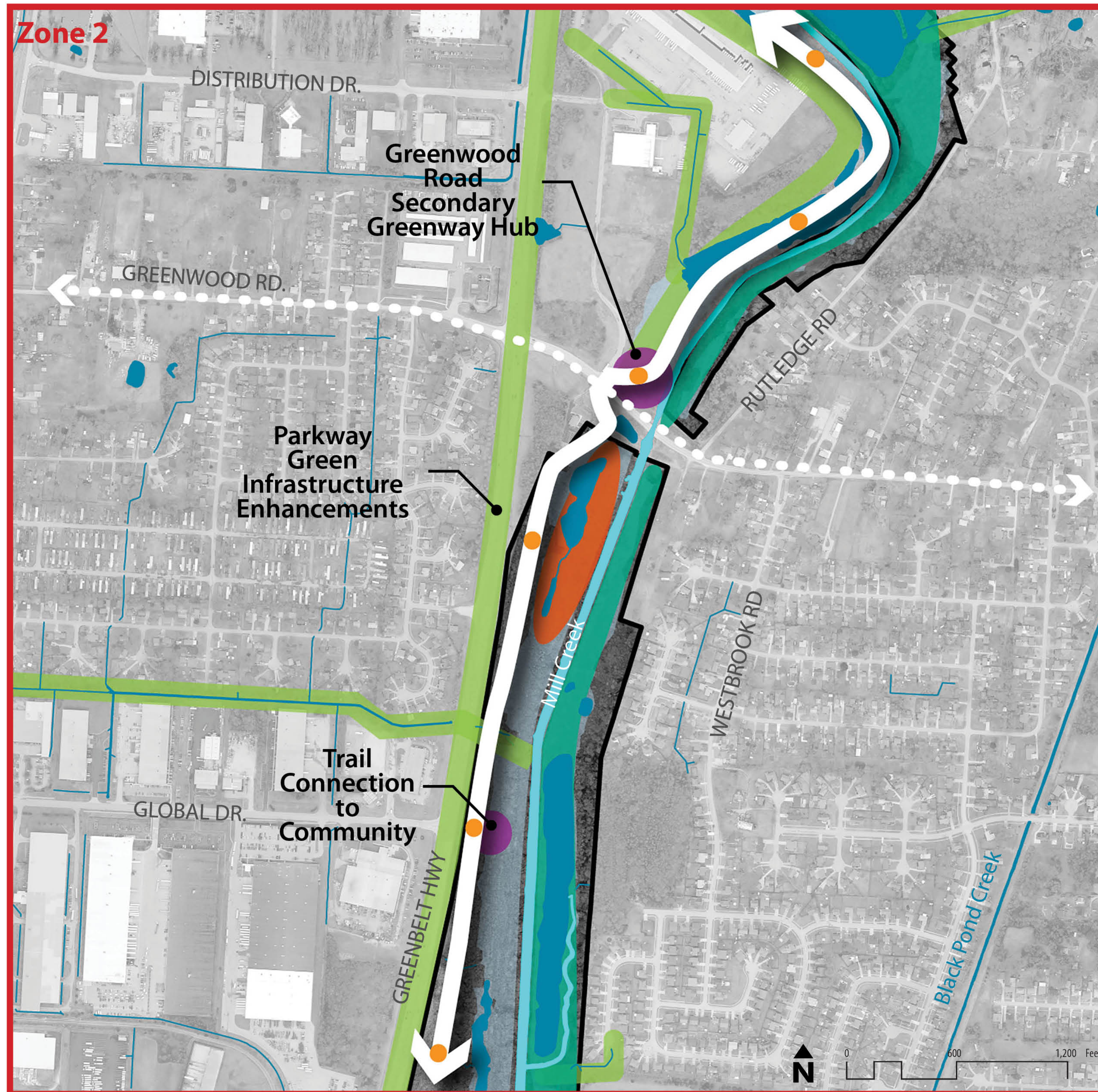




Zone 2 Concept Exploration



Key Map



Grab a sticky note and share your thoughts.

Have we missed anything?
Boat access (5), Accessibility (5), Equestrian (2)

What do you like / dislike?
Like a variety of options to experience/access water; fishing options (7); experience the natural environment (7)

LEGEND

- Proposed Continuous Mill Creek Greenway Trail
- Proposed Greenwood Rd. Mixed-Use Trail
- Secondary Greenway Hub / Trailhead *
- Tertiary Greenway Hub / Trailhead *
- Interpretive/Educational Rest Stop
- Existing Bald Cypress Wetland
- Stream Restoration Zone
- Promote Stewardship with Public/Private Partnership Opportunity

* Mill Creek Greenway Hubs

Primary Hubs - Located in / next to existing parks or trailheads and have the most space available for Greenway amenities such as parking, signage, benches, bike racks, trailheads, recreation, and access to the Mill Creek.

Secondary Hubs - Located along existing or planned multi-use/bike paths and present potential opportunities to include a small parking area, signage, benches, bike racks, trailheads, and access to the Mill Creek.

Tertiary Hubs - Located along intersecting roadway corridors or community access points and present potential opportunities for a trailhead and signage.

How would you like to interact with water throughout the Greenway (i.e. Mill Creek, streams, lakes, wetlands)?

Use stickers to select your top 3 preferences below.



Creeking

63 (56%)



Fishing

58 (51%)



Stone Crossings

54 (48%)



Overlooks

43 (38%)



Bridges

42 (37%)



Boardwalks

38 (34%)



Outdoor Classrooms

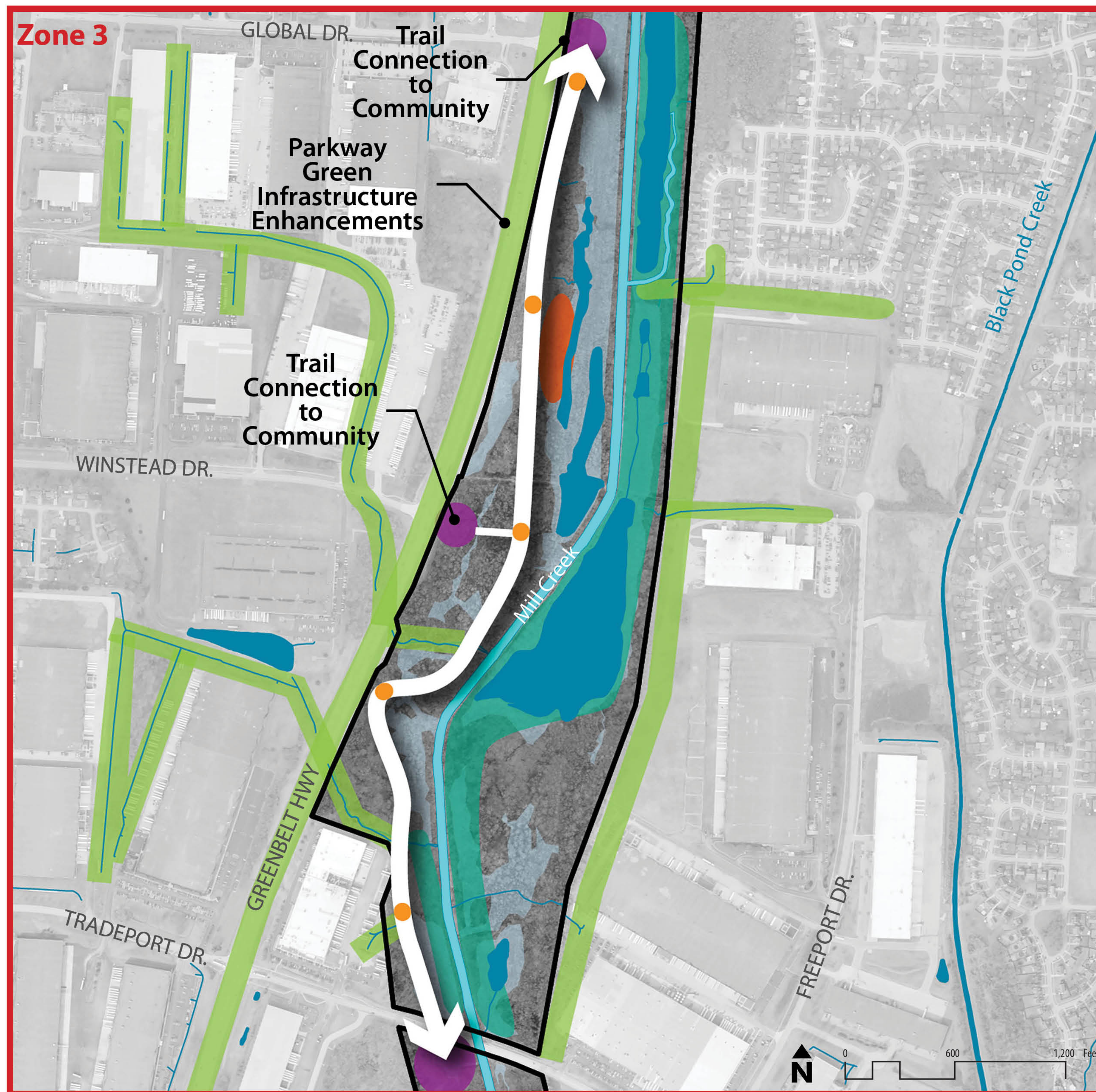
19 (17%)



Zone 3 Concept Exploration



Key Map



LEGEND

- Proposed Continuous Mill Creek Greenway Trail
- Secondary Greenway Hub / Trailhead
- Tertiary Community Greenway Hub / Trailhead
- Interpretive/Educational Rest Stop *
- Existing Native Grassland Area
- Stream Restoration Zone
- Promote Stewardship with Public/Private Partnership Opportunity

Grab a sticky note and share your thoughts.

Have we missed anything?

Include all cultural history

What do you like / dislike?

Opportunity to learn about local history; Use of art to tell multiple stories

Do you know specific stories that should be told? **Civil War**

* Interpretive/Education Rest Stops along Greenway

Designated stops, a 1/4 mile apart, would allow trail users to stop, rest, and reflect. These stops could include a bench and interactive features (i.e., educational signage, classroom, art, etc.) focused on ecological/nature content (i.e., importance of native grasslands and Bald Cypress wetlands) and cultural content (i.e., Native American history).



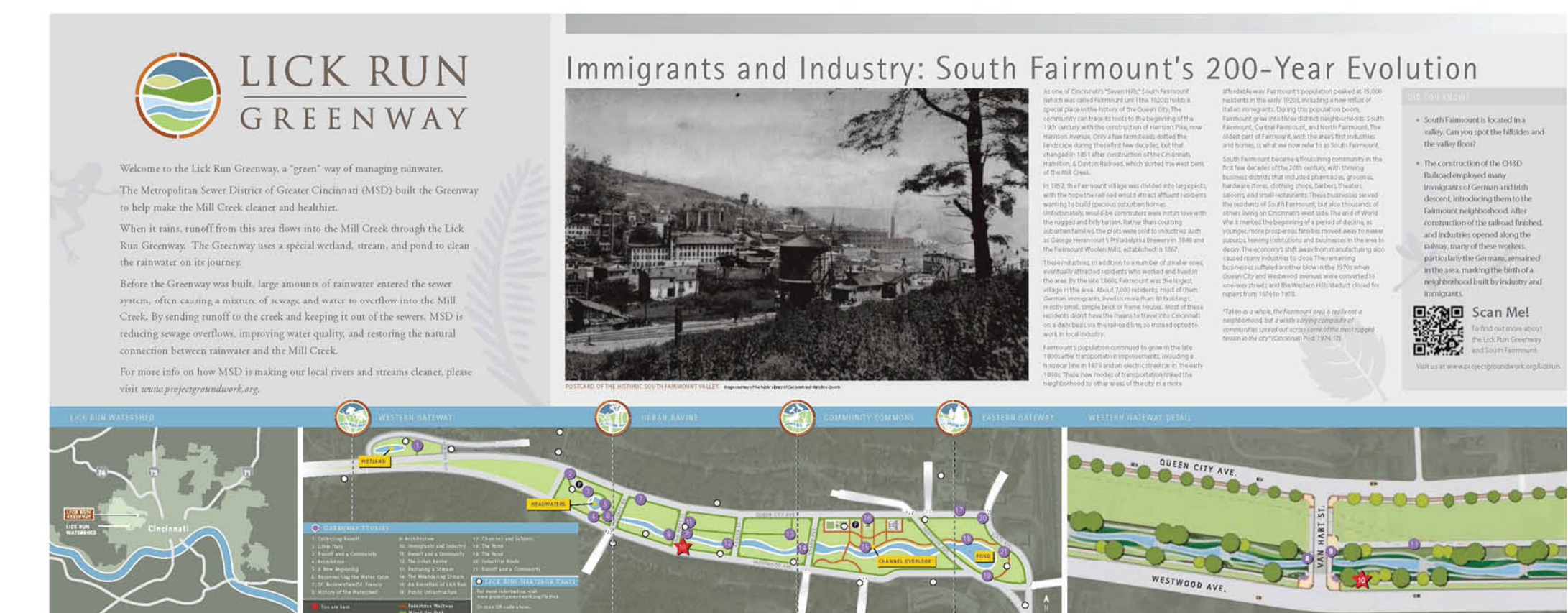
Educational Signage along Trail



Cultural Signage along Trail



Outdoor Classroom along Trail



Example of Stories Included on Signage

Are there particular stories that should be told at these Interpretive/Educational Rest Stops?

Use stickers to select your top 3 preferences below.

• Local wildlife	61 (55%)
• Local Native American history	52 (47%)
• Local plants/vegetation	49 (44%)
• Local neighborhood history	36 (32%)
• A mix of all stories	32 (29%)
• Local African American history	20 (18%)
• Art	17 (15%)
• Local community groups / individuals (who are they?)	11 (10%)
• Role of industry in the Mill Creek corridor	2 (6%) in person



Zone 4 Concept Exploration



Key Map



LEGEND

- Proposed Continuous Mill Creek Greenway Trail
- Existing Bike Lane
- Greenway Hub / Trailhead
- Greenway Trail Water Crossing
- Interpretive/Educational Rest Stop *
- 2 Acre Lake Enhancement & Connection
- Stream Restoration Zone
- Promote Stewardship with Public/Private Partnership Opportunity

Grab a sticky note and share your thoughts.

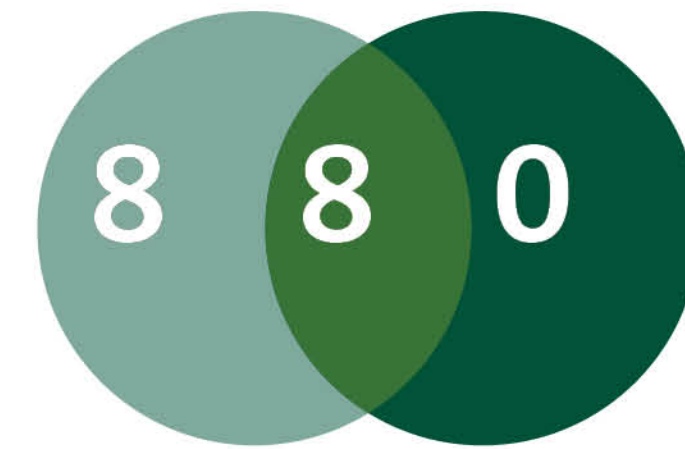
Have we missed anything?

Need for accessibility

What do you like / dislike?

Like: Focus on nature; inclusive

Something for Everyone



What is 8 & 80?

The idea that if public space is designed to improve the quality of life for an 8 year old and an 80 year old, it will be great for all people of all abilities.



Mobility Challenges



Toddler



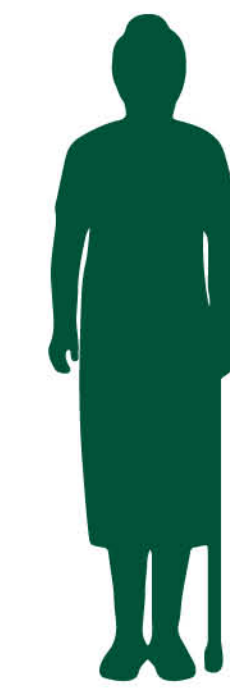
School-ager



Teenager



Adult



Senior Adult

If interactive amenities are included, what should their character be?

Use stickers to select your top 3 preferences below.



Built in Nature

86 (78%)



Nature Themed

68 (62%)



Fitness / Wellness

47 (43%)



Artful

43 (39%)



Culturally Themed

25 (23%)



Traditional

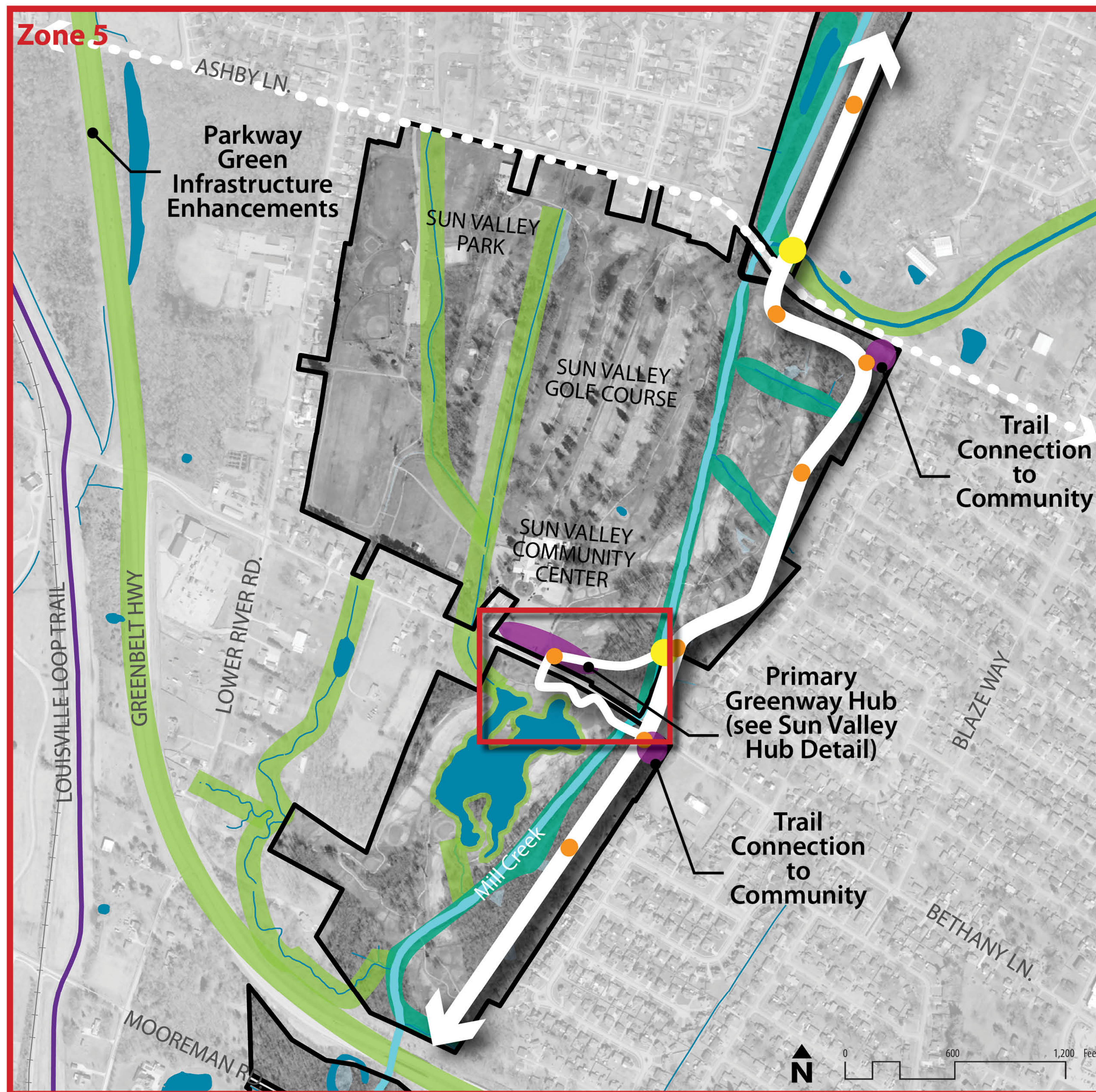
20 (18%)



Zone 5 Concept Exploration



Key Map



LEGEND

- Proposed Continuous Mill Creek Greenway Trail
- Proposed SW Greenways Master Plan Linkage
- Greenway Hub / Trailhead
- Greenway Trail Water Crossing
- Interpretive/Educational Rest Stop
- Stream Restoration Zone
- Promote Stewardship with Public/Private Partnership Opportunity

Grab a sticky note and share your thoughts.

Have we missed anything?
Ability to continue to sustain an active golf course while providing safe access for non-golfers

What do you like / dislike?
Like: stormwater management; hiking loop; native plants/buffers

Sun Valley Hub Detail

Trailhead Connection with Plantings & Parking (75 - 82 spaces)

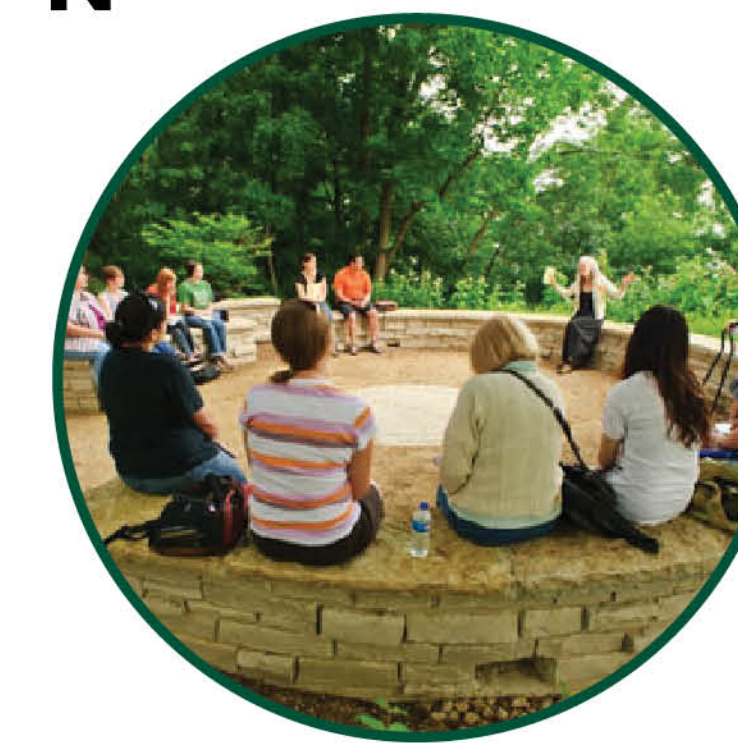
Stormwater Best Management Practice with Native Planting

Greenway Path Connection

Improved Crossing for Safety

Arboretum/Botanical Gardens/Demonstration Area

Pond Improvements



What Would You Like to See at the Sun Valley Hub?

Use stickers to select your top 3 preferences below.

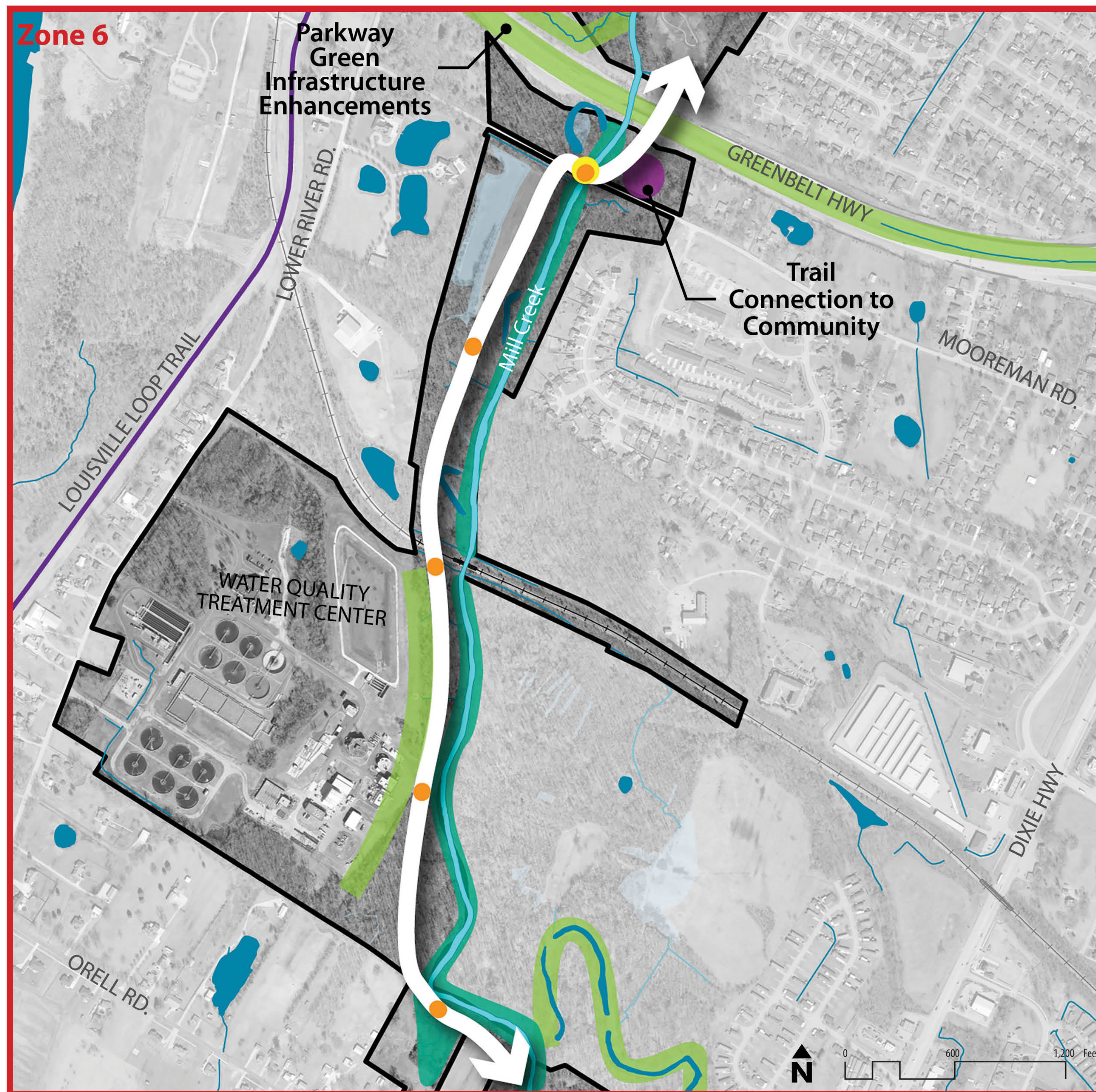
- Native planting buffer along trail / road **62 (56%)**
- Green Infrastructure / Stormwater Best Management Practices at parking edges and around lakes (i.e., rain garden, swale, etc.) **60 (55%)**
- Botanical gardens **52 (47%)**
- Improved crossing on Bethany (i.e., signaled light) **45 (41%)**
- Greenway Trail path adjacent to existing cart paths with vegetated buffer **41 (37%)**
- Outdoor classroom **23 (21%)**
- Stewardship / "Sustainability At Home" Demonstration Area **22 (20%)**



Zone 6 Concept Exploration



Key Map



Grab a sticky note and share your thoughts.

Have we missed anything?
Need accessible amenities; access L. Loop whenever possible; MSD water treatment education; opportunity to engage with horses

What do you like / dislike?
Like: Includes the community (3); Interaction with nature/wildlife (4); dog

LEGEND

- Proposed Continuous Mill Creek Greenway Trail
- Tertiary Community Greenway Hub / Trailhead
- Greenway Trail Water Crossing
- Interpretive/Educational Rest Stop
- Stream Restoration Zone
- Promote Stewardship with Public/Private Partnership Opportunity

What types of PASSIVE recreation would you like to see along the Greenway?
 Use stickers to select your top 3 preferences below.



Fishing

51 (47%)



Wildlife Viewing

48 (44%)



Walking Paths

47 (44%)



Dog Friendly Area

40 (37%)



Picnicking

32 (30%)



Swings

25 (23%)



Pavilion / Gathering Space

25 (23%)



Bird Watching

19 (18%)

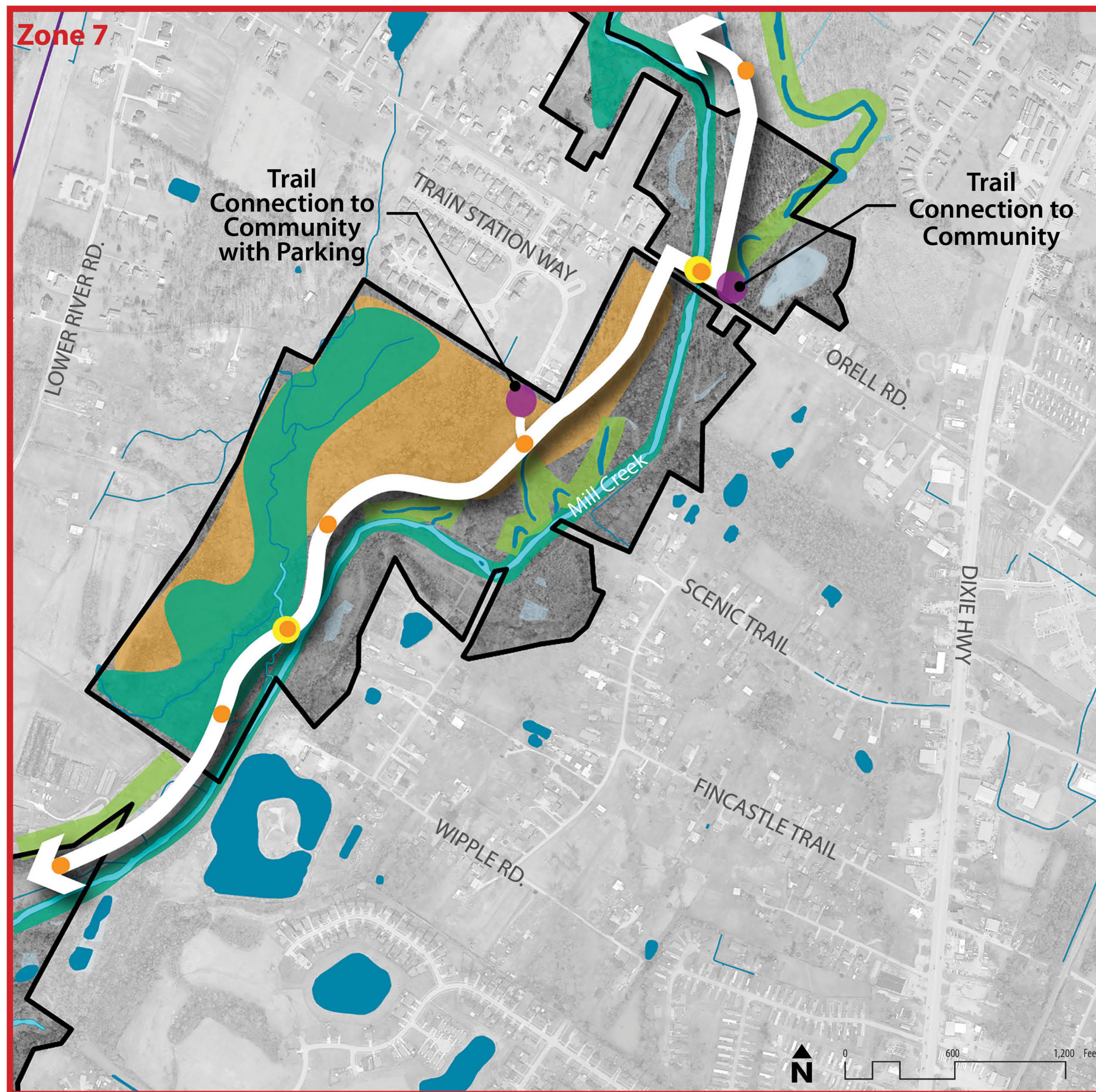


Wildlife / Bird Blind

12 (11%)



Zone 7 Concept Exploration



Grab a sticky note and share your thoughts.

Have we missed anything?

Emergency call centers

What do you like / dislike?

Like: Variety of options for everyone; everything (4)

LEGEND

- Proposed Continuous Mill Creek Greenway Trail
- Tertiary Community Greenway Hub / Trailhead
- Interpretive/Educational Rest Stop
- Greenway Trail Water Crossing
- Coordinate Disc Golf, Stream Restoration & Proposed Trail
- Stream Restoration Zone
- Promote Stewardship with Public/Private Partnership Opportunity

What types of ACTIVE recreation would you like to see along the Greenway?
Use stickers to select your top 3 preferences below.



Hiking Trails

59 (55%)



Running/Walking Trail

32 (30%)



Ropes Course / Zip Line

32 (30%)



Sled Riding

27 (25%)



Bike Trail

26 (24%)



Disc Golf

24 (22%)



Trail with Fitness Stations

22 (21%)



Equestrian Trails

19 (18%)



Sport Courts

18 (17%)



Rock Climbing

13 (12%)



Wellness Classes

13 (12%)

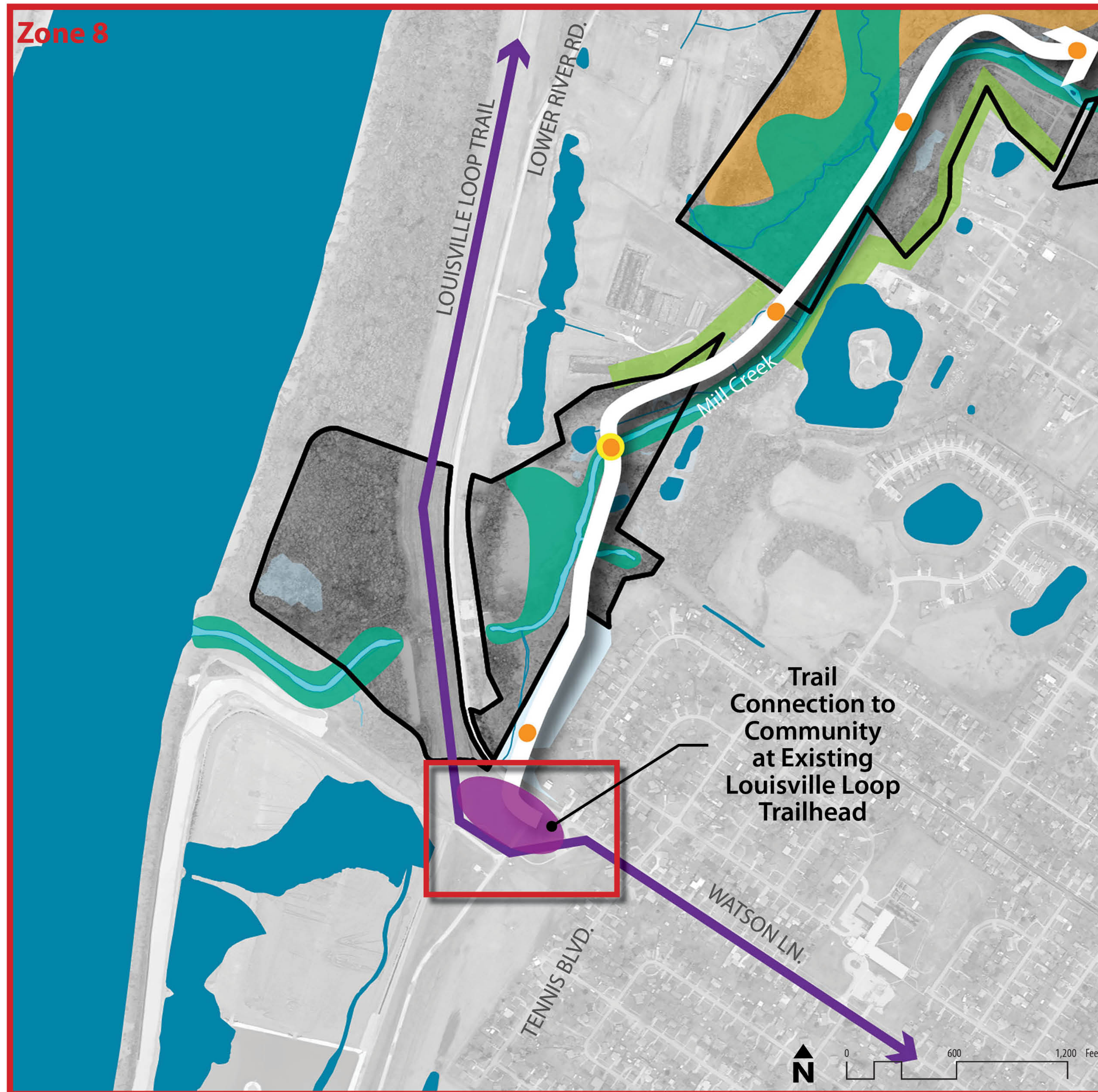


Fitness Station Hub

7 (7%)



Zone 8 Concept Exploration



Watson Road Hub Detail

Interpretive/ Education Stop with View of Mill Creek

Continue Forested Edge/Tree Nursery Across Watson Ln.

Meadow as Interpretation of Creek Continuation

Focal Point / Interpretive Node

Pavilion / Picnic Grove

Parking (36-42 spaces)

Play Area

Trailhead Connection to Louisville Loop



What Would You Like to See at the Watson Lane Hub?

Use stickers to select your top 3 preferences below.

• Restrooms	47 (44%)
• Meadow / pollinator gardens	38 (36%)
• Reforestation south of Watson Lane	35 (33%)
• Greenway trail overlook to the Mill Creek	31 (29%)
• Tree nursery to supply trees for the Mill Creek Greenway corridor	24 (22%)
• Play area	24 (22%)
• Pavilion with picnic grove	17 (16%)

Grab a sticky note and share your thoughts.

Have we missed anything?

MSD Education Area; trail connecting Farnsley Morman

What do you like / dislike?

Concern about access for first responders, safety, vandalism, illegal dumping, maintenance in all zones

LEGEND

- Proposed Continuous Mill Creek Greenway Trail
- Existing Louisville Loop Trail
- Primary Community Greenway Hub / Trailhead (see Watson Road hub detail)
- Interpretive/Educational Rest Stop
- Greenway Trail Water Crossing
- Stream Restoration Zone
- Coordinate Disc Golf, Stream Restoration & Proposed Trail
- Promote Stewardship with Public/Private Partnership Opportunity

